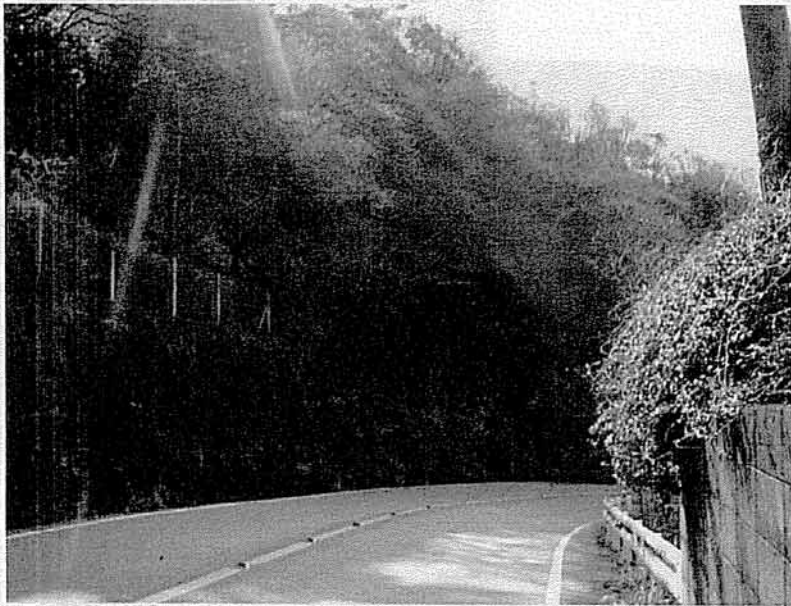
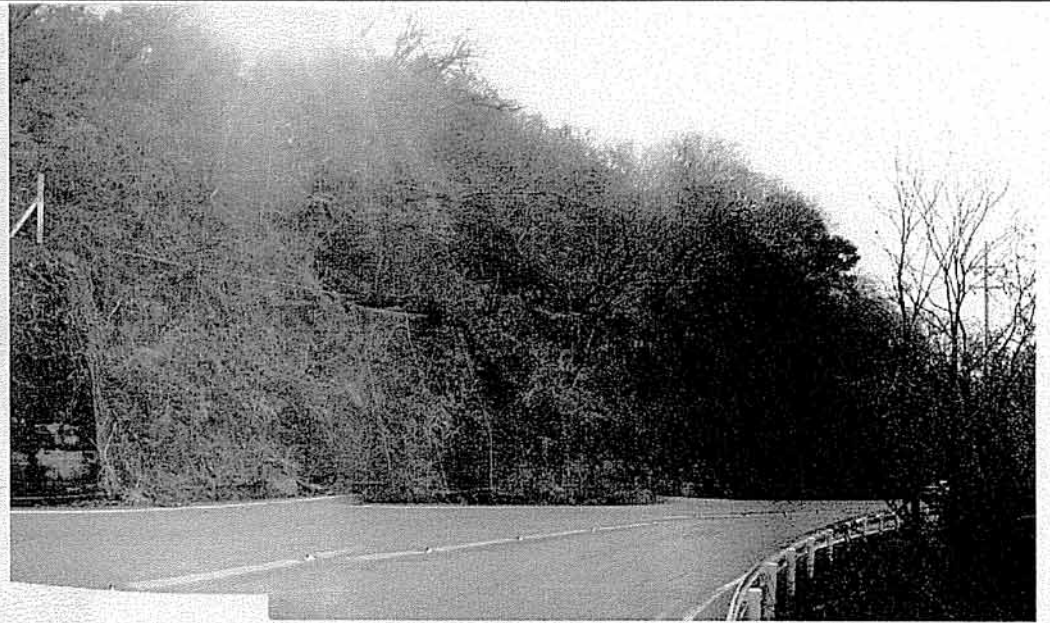


現場写真集(1)



A



B



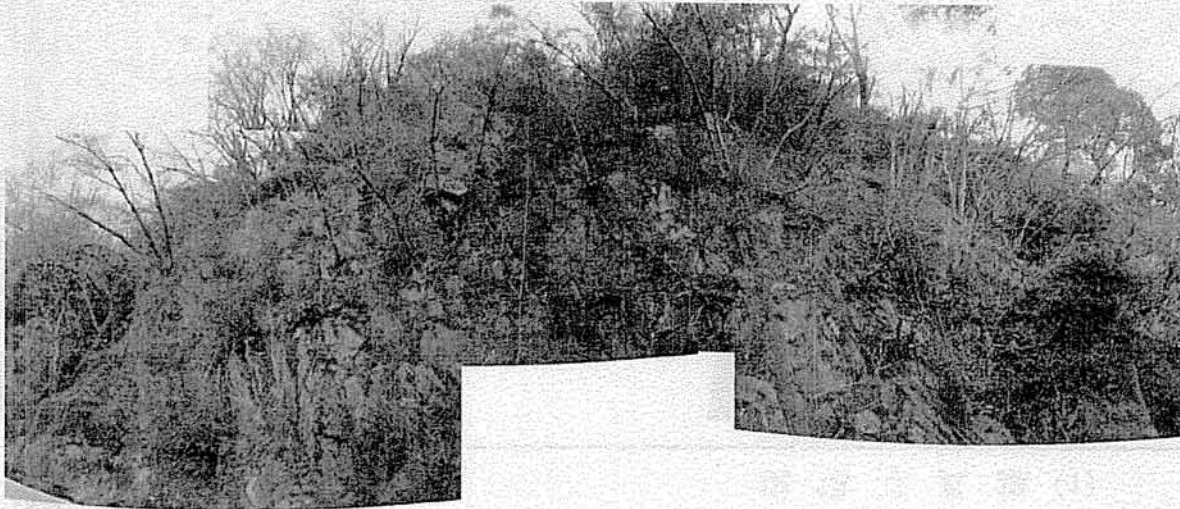
C



D

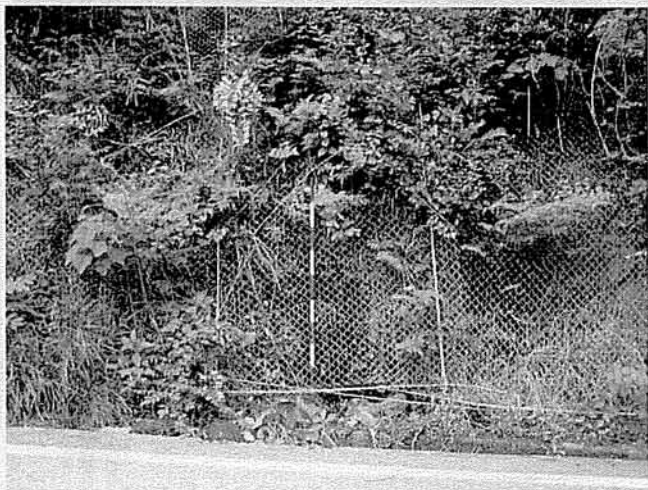


F

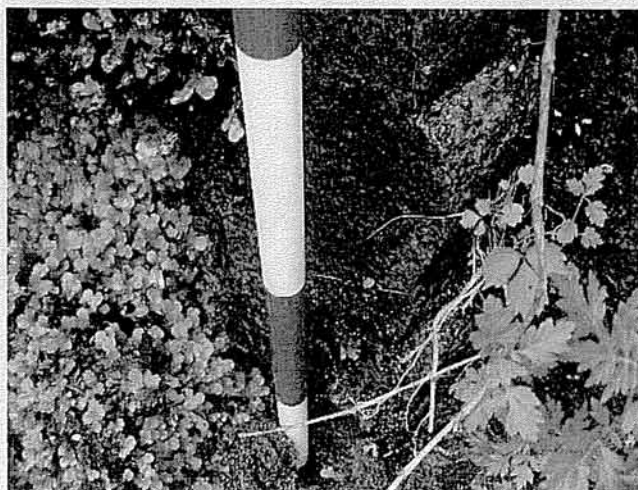


E

現場写真集(3)



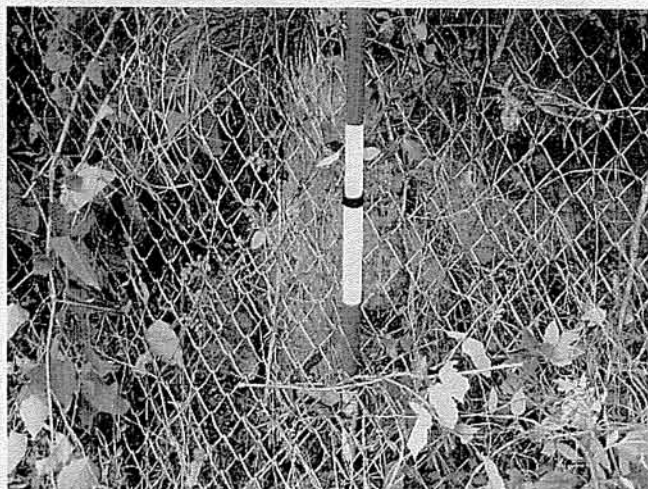
2



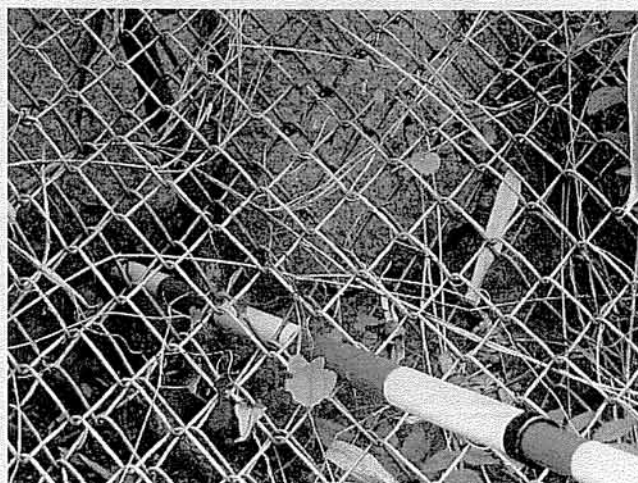
1



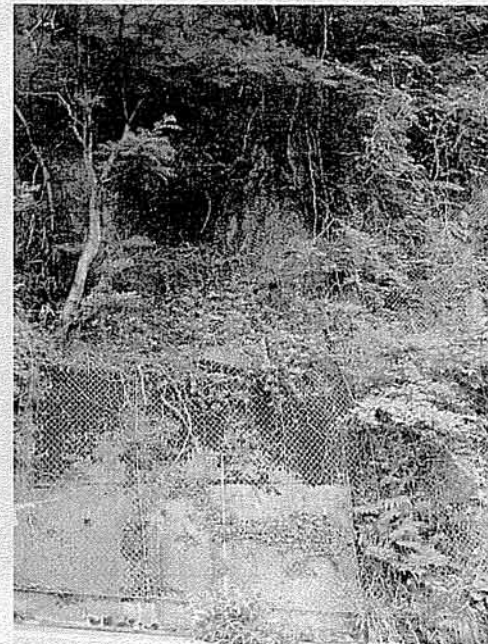
3



4



5



6

現場写真集(4)



8



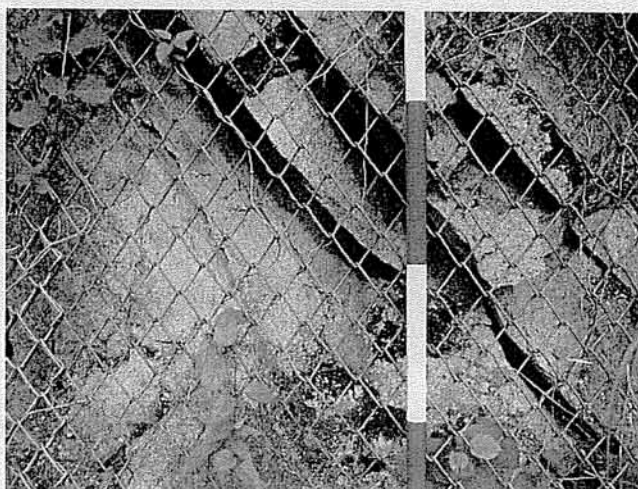
9



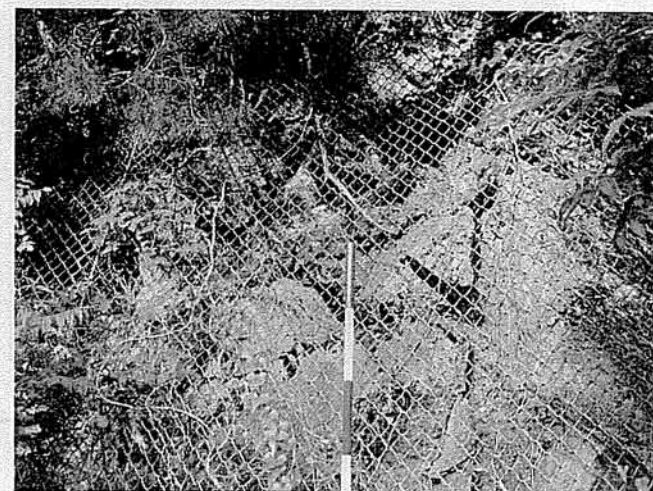
10



7



11



12

現場写真集(5)



13

φ10~15cmのgr角礫



14



15



16



17

転石No.1-5(1.0×0.6×0.5m)



18

現場写真集(6)



19



20

φ0.4~0.8mのgr転石(人工)



21



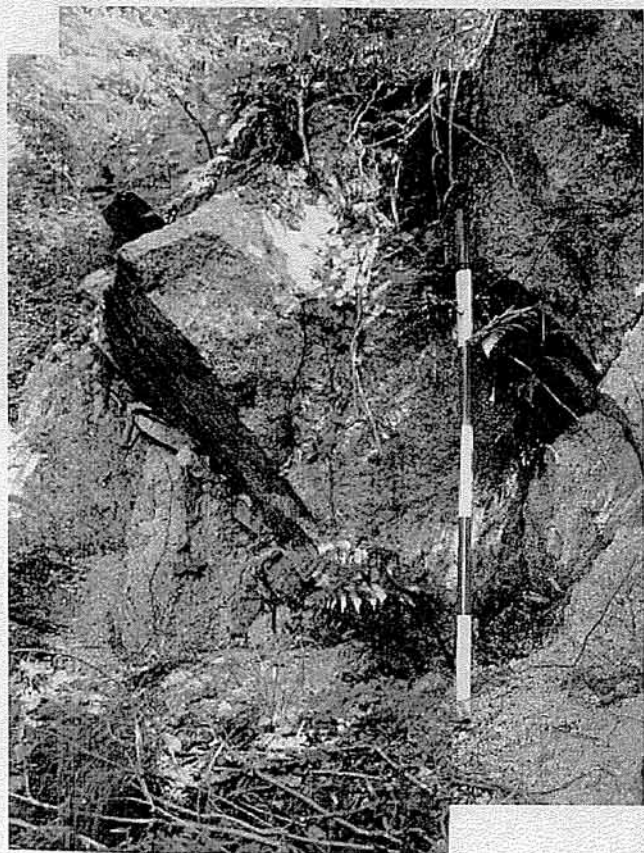
22



23

0.6×0.5×0.3m

現場写真集(7)

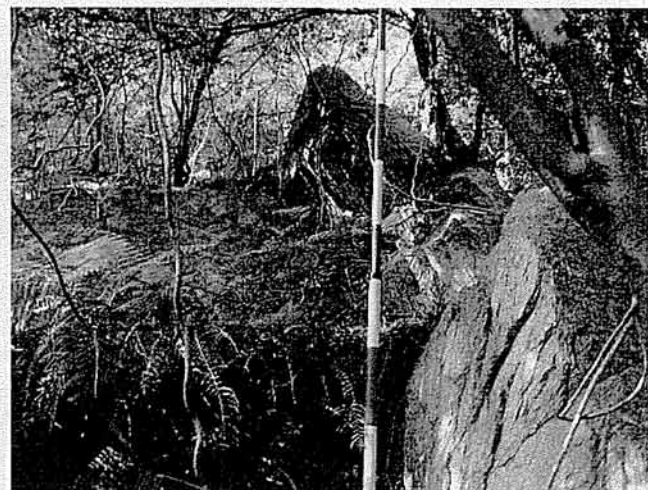


24

やや風化を受けた岩盤 亀裂開口 5~15cm
亀裂沿いに縊み見られる
転石No.2-4(0.7×1.0×1.2m)



25



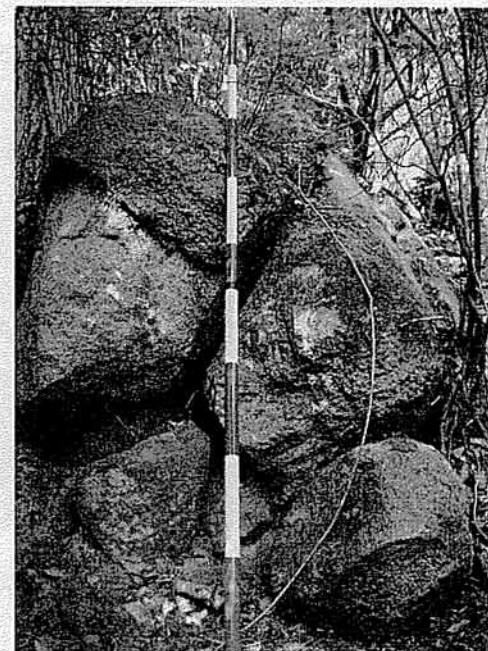
26

転石No.2-1(φ1.5m)



27

転石No.2-1(φ1.5m)



28

転石No.2-3(0.9×0.5×0.5m)

現場写真集(8)



29
転石No.2-2(0.8×1.4×1.0m)



30
φ0.5×0.6×0.7m



31
CL級gr 2~5cm開口亀裂 下方マサ化
開口亀裂1~2cm 緩み見られる



32



33

現場写真集(9)



34



35

φ50~100cmの(人工)転石
転石No.2-5(φ0.5~1.0m散在)



36

φ50~100cmの(人工)転石
転石No.2-6(1.2×0.7×0.6m)



37

転石No.2-8(0.8×0.5×0.4m)



38